

Mouth Care Matters

IHI Project Team: Alisa Nicol, Mary Gittins, Debora Howe, Fiona Marshall; Dental and Speech and Language Therapy Departments

Introduction

Hospitalisation is associated with deterioration in the oral health of patients. Poor oral health has been linked to increase in hospital acquired infections, poor nutritional intake, longer hospital stays and increased care costs, in addition to deterioration in quality of life, dental health and experience and dignity related issues for patients.

Aim of IHI project: To improve mouthcare by using patient experiences to inform what needs to be improved, creating guidelines, pathways, providing training, identifying equipment and recording of mouth care in care plans.

Pilot on Ward 31 (Care of Elderly ward) RVI, to ensure all patients have comfortable mouths.

Methods

Patient and staff questionnaires. Mouthcare screens. Audit of notes and equipment.

Face to face training on Ward 31 RVI, Resources provided, Review of recording on powerchart.

Mouthcare Guidelines produced including recommended equipment and how to order and onward referral pathways.

Patient experiences

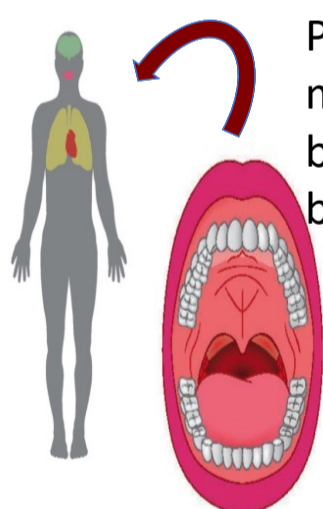
Mouth feels dry

I don't know where my dentures are. I think they're lost.

My teeth aren't as good as they should be, not as clean. I haven't been asked about them. Look they can do all that (pointing at cannula) but the basics get neglected. i can't do it in bed as don't have water and can't get to the bathroom

Feels awful

Everybody deserves the right to a clean and comfortable mouth.



Putting the mouth back in the body



Oral health is integral to general health

Mouthcare Equipment

Safety alert – pink sponges NOT recommend

Soft toothbrush

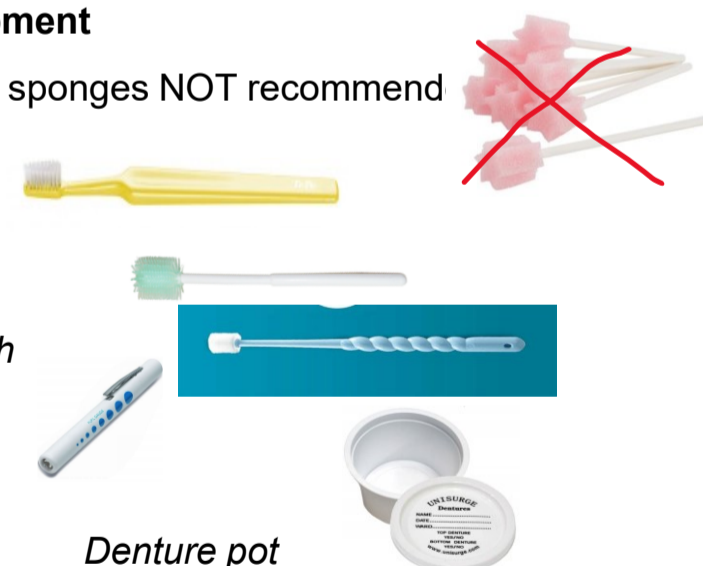
MouthEze

Oralieve 360 brush

Pentorch

Toothpaste

Dry Mouthgel



Denture pot

Conclusion

Mouthcare is a fundamental part of essential care and is often overlooked. All health care professionals need access to training and all Wards need supplies of appropriate mouthcare equipment. Mouthcare needs to be recorded in patient notes.

Unfortunately, time is always the biggest challenge, but NUTH Trust are aware of the importance of improving mouthcare. A Mouthcare Lead is to be employed with funding from HEE to move forwards with this important work. Mouthcare guidelines will be implemented throughout the rest of NUTH and training and support will be adapted as the project progresses.

Acknowledgements: Thanks to patients and staff on ward 31 RVI and all staff who have supported this project

Reference [Mouthcarematters.hee.nhs.uk/links-resources/mouth-care-matters-resources-2](https://mouthcarematters.hee.nhs.uk/links-resources/mouth-care-matters-resources-2)

